

# WATER PROCESS SOLUTIONS

AfterBlend® Output Booster

Sales Literature No. WPSSL48035



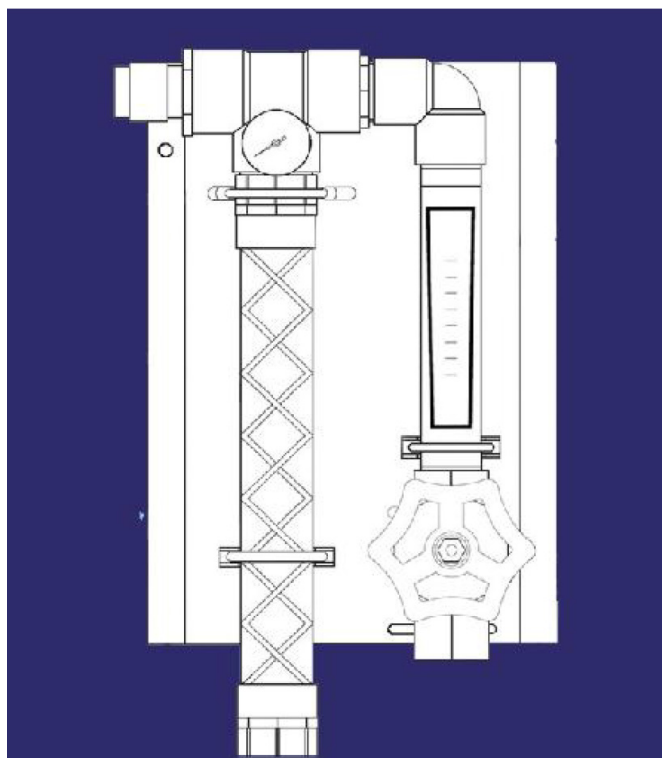
## General Description

The mounted unit is designed to enhance the output capability of any size PolyBlend® polymer blending and feeding system. When connected to the stock solution discharge port of the PolyBlend® unit and a source of dilution water, the AfterBlend® booster can increase total system output by 600-800 GPH (2271.2-3028.3 LPH), depending on the model.

Depending upon the output of the PolyBlend® unit used in the system, total stock solution output can be precisely controlled in a range up to 7200 GPH (27,255 LPH).

The unique confluence design of the AfterBlend® booster allows independent adjustment of flow rates for both the stock solution and the dilution water streams, despite inlet water differential pressures (from 8-40 psig).

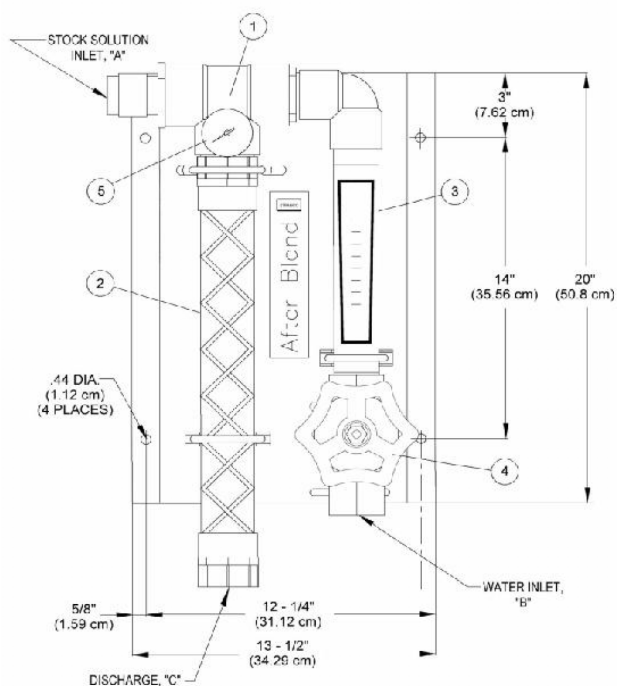
A static mixer with PVC housing provides thorough blending of the additional dilution water without damage to the polymer, which has already been activated in the mixing chamber of the PolyBlend® system.



## Flow Rate

AF-600	60 - 600 GPH 227.1 - 2271.3 LPH
AF-1200	120 - 1200GPH 454.30 - 4542.5 LPH
AF-2400	240 - 2400 GPH 908.5 - 9086 LPH
*AF-3600	360 - 3600 GPH 1362.8 - 13, 627.5 LPH
*AF-4800	480 - 4800 GPH 1817 - 18,170 LPH

## General Layout



Item No.	Description
1	Tee Assembly
2	Static Mixer
3	Flowmeter 0-10 GPM (0-37.9 LPM) 0-20 GPM (0-75.7 LPM) 0-40 GPM (0-151.4 LPM) 0-60 GPM (0-227.1 LPM) 0-80 GPM (0-302.8 LMP)
4	Globe Valve
5	Pressure Gauge

**Note:** PolyBlend® system discharge pipe size varies depending on model. Stock solution inlet of AfterBlend® booster should conform to PolyBlend® system. UGSI Chemical Feed, Inc. will supply appropriate stock solution inlet size on request.

Model	"A" in / mm	"B" in / mm	"C" in / mm
AF-600	1" (25.4)	1" (25.4)	2" (50.8)
AF-1200	1" (25.4)	1" (24.5)	2" (50.8)
AF-2400	1-1/2" (38.1)	1-1/2" (38.1)	2" (50.8)
*AF-3600	2" (50.8)	2" (50.8)	2" (50.8)
*AF-4800	2" (50.8)	2" (50.8)	2" (50.8)

**Note:** Optional solenoid valve for on/off control of dilution water available, add "S" at end of model.


\* AfterBlend® booster configuration is different than shown. Please consult factory for certified dimensional drawing.



---

[www.waterprocesssolutions.com](http://www.waterprocesssolutions.com)  
[enquiries@waterprocesssolutions.com](mailto:enquiries@waterprocesssolutions.com)

 Water-Process-Solutions

 @waterwps

Sales Literature No. WPSSL48035

Revision No.1 23/04/2020

Water Process Solutions Ltd  
Unit 10,  
Mill Hall Business Estate,  
Aylesford,  
Kent, ME20 7JZ

**WATER PROCESS**  
 **SOLUTIONS**