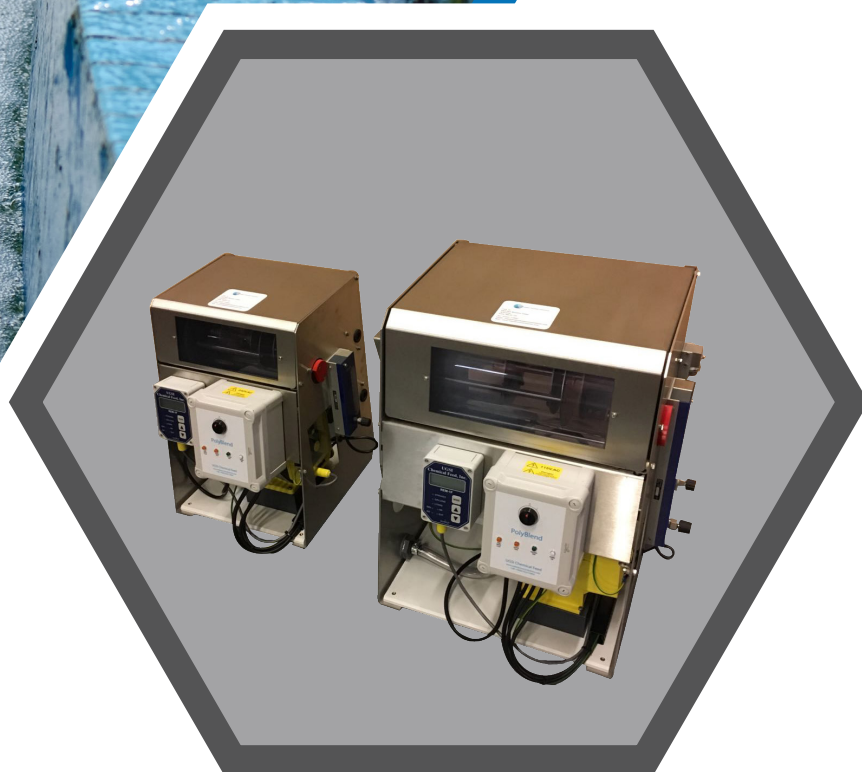
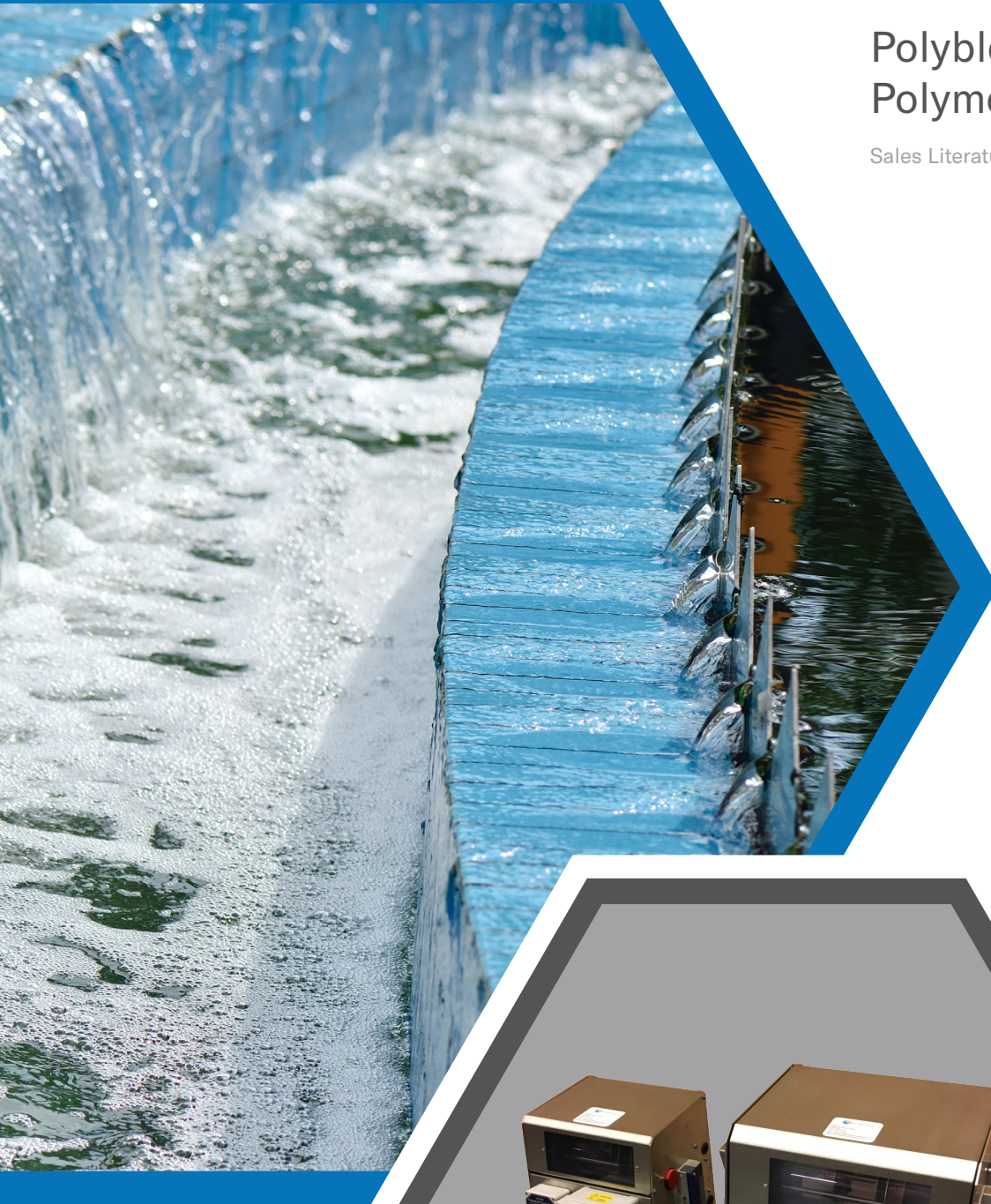


## Polyblend HMZ Liquid Polymer Feed

Sales Literature No. WPSSL03000



### Introduction

The PolyBlend® systems are automated polymer feed systems for precise control and economical performance of liquid grade polymers.

Polyelectrolytes require specifically designed energy regimes during preparation to attain the correct physiochemical state in solution to perform the tasks they were designed for.

That's why the PolyBlend® automated polymer feed systems provide precise, programmable control of dosing rate, dilution levels, retention time and energy. With this exclusive control of these process variables you can be sure your polymers have the ideal mixing environment. That means you get the maximum yield efficiency from any polymer.

## PolyBlend Systems

The PolyBlend® system has proven itself superior and more economical than other systems, including batch mixing, static mixer combinations and centrifugal pumps. That demonstrated superiority in yield comparisons has made PolyBlend® systems the preferred choice worldwide for polymer activation.

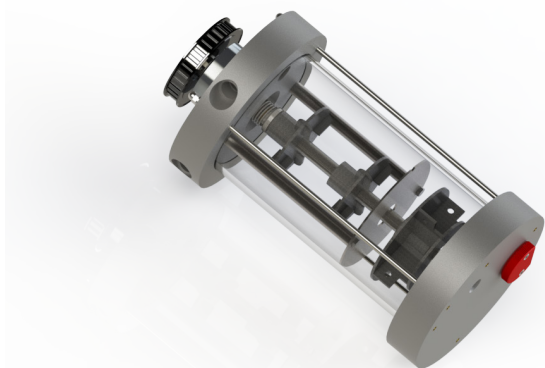
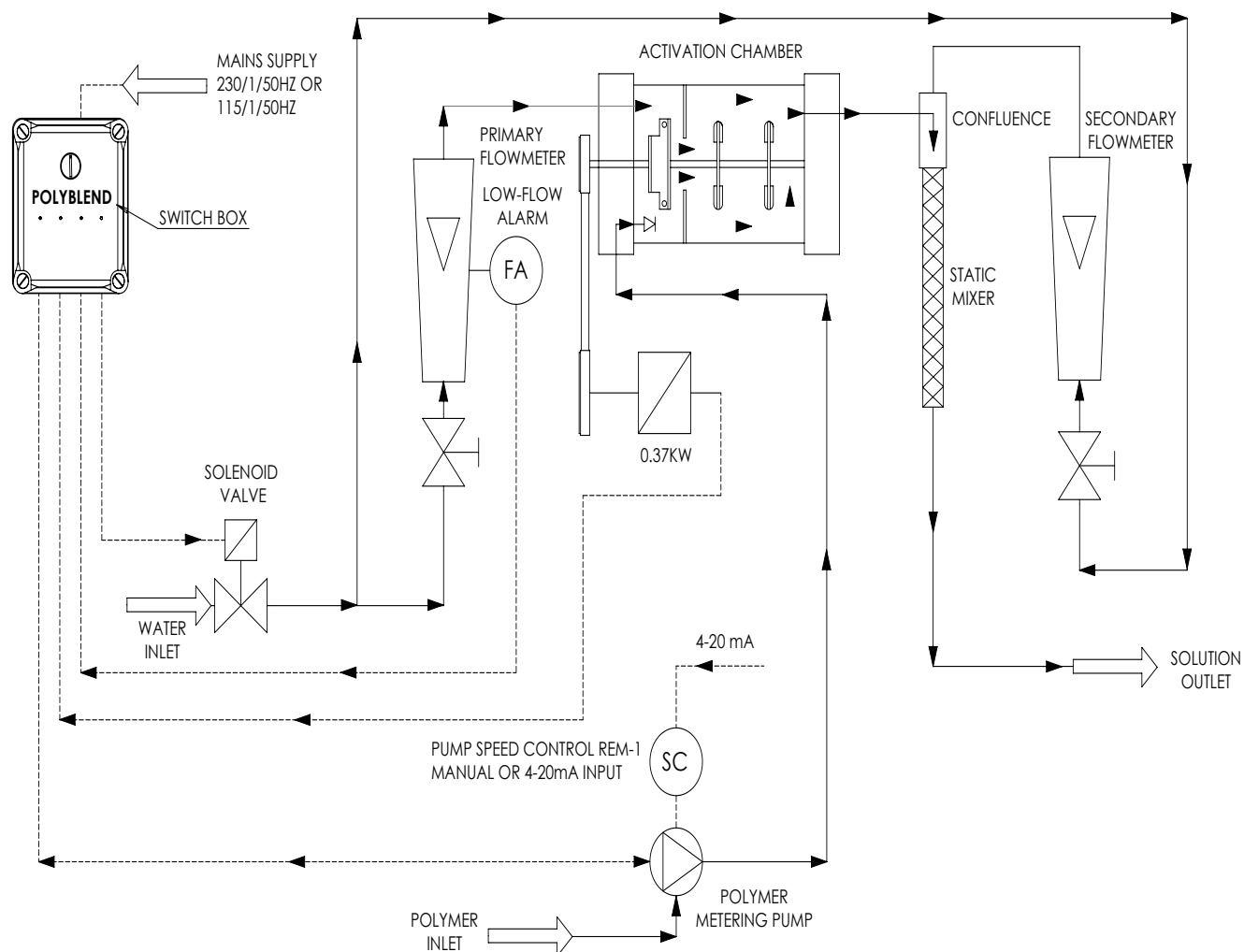
PolyBlend® systems achieve this unequalled performance with a simple and reliable ongoing technology from in-house corporate R & D technology that provides consistently uniform and repeatable results.

Best of all, you achieve these results with totally automated operation, giving you the right polymer activation for optimum coagulation and flocculation every time. Other benefits are its versatility, portability, compactness, resilience and ease of installation and operation.

- High capacity mixing chamber
- The unique multi-zone activation chamber is designed to give energy values appropriate to the swelling and hydration needs of the chemical through this operation
- Flow sensors, variable set-points for low water protection, auto restart
- Fast and easy service of valve assemblies without disturbing the suction and discharge piping
- Electrical: 110 V AC or 220/230 V AC / 1 pH / 50 Hz
- Maximum water pressure: 5 bar
- Mixer motor: 0.37 KW, TEFC
- Single phase continuous duty
- Remote Proportional Control via 4-20mA signal or manual control



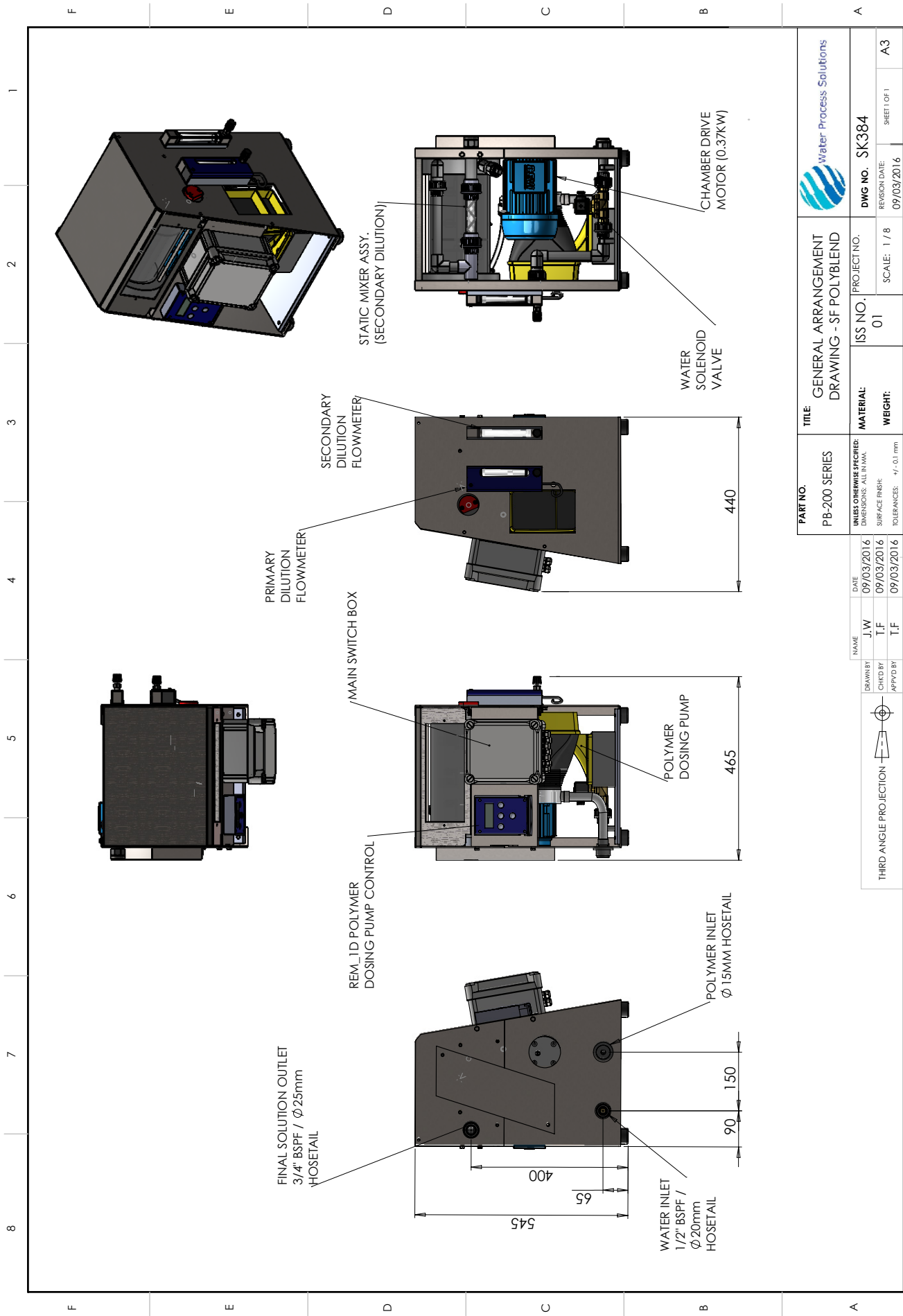
# PolyBlend PB 200 & 1000 Series Flow Schematic



PolyBlend System Model No.	Dilution Water Flow l/h Primary / Secondary	Neat Polymer Feed Max l/h
PB 16 - 1	5 - 60	3.7
PB 100 - 1	50 - 375	3.7
PB 100 - 2	50 - 375	7.5
*PB 200 - 1	50 - 375 / 0 - 500	3.7
*PB 200 - 2	50 - 375 / 0 - 500	7.5
PB 600 - 2	0 - 2400	7.5
PB 600 - 4.5	0 - 2400	17
*PB 1000 - 2	0 - 2400 / 0 - 2400	7.5
*PB 1000 - 4.5	0 - 2400 / 0 - 2400	17

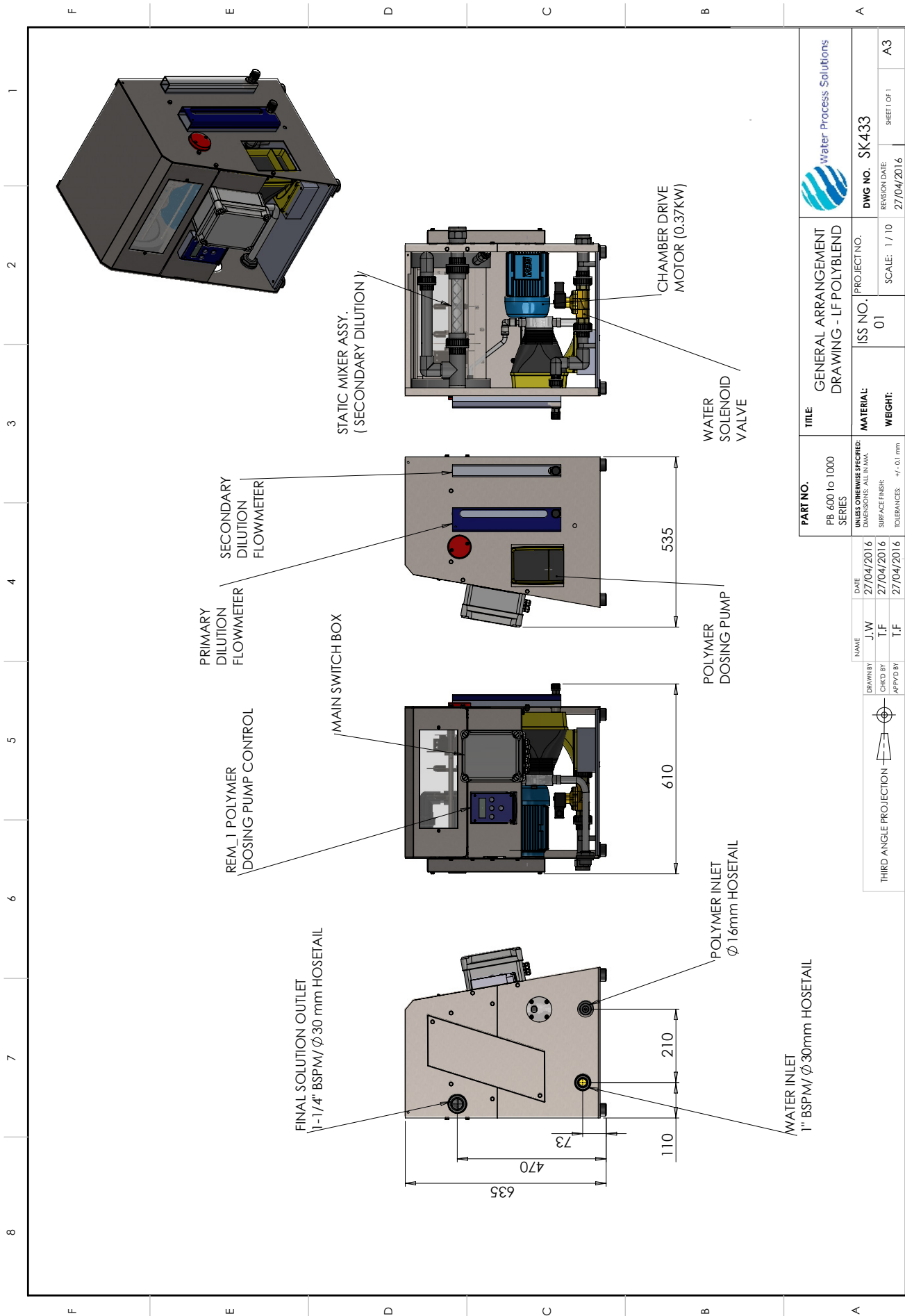
\*These models internally incorporate the secondary dilution system





<b>PART NO.</b> PB-200 SERIES	<b>TITLE:</b> GENERAL ARRANGEMENT DRAWING - SF POLYBLEND			
	<b>UNLESS OTHERWISE SPECIFIED:</b> DIMENSIONS: ALL IN MM. SURFACE FINISH: TOLERANCES: $\pm 0.1$ mm	<b>ISS NO.</b> 01	<b>PROJECT NO.</b>	<b>DWG NO.</b> SK384
	<b>DATE</b> 09/03/2016	<b>NAME</b> J.W	<b>SCALE:</b> 1 / 8	<b>REVISION DATE:</b> 09/03/2016
<b>THIRD ANGLE PROJECTION</b>		<b>DRAWN BY</b> T.F	<b>CHECKED BY</b> T.F	<b>SHEET OF 1</b> A3

PB 600-1000



PART NO.		TITLE:		PROJECT NO.		DWG NO. SK433	
PB 600 to 1000 SERIES		GENERAL ARRANGEMENT DRAWING - LF POLYBLEND		ISS NO. 01		REVISION DATE: 27/04/2016	
UNLESS OTHERWISE SPECIFIED: DIMENSIONS: ALL IN MM.		MATERIAL:		SCALE: 1 / 10		SHEET OF 1	
SURFACE FINISH: TOLERANCES: $\pm$ 0.1 mm		WEIGHT:		27/04/2016		A3	





Water Process Solutions comprises a group of highly experienced water treatment professionals. Our personnel have backgrounds with brands and companies such as Wallace & Tiernan, Stranco and Chemfeed, all well known and trusted within the water industry.


Based in Kent, our aim is to provide customers with the equipment and support they need for effective and reliable water treatment.


For further information, visit our website.



---

[www.waterprocesssolutions.com](http://www.waterprocesssolutions.com)  
[enquiries@waterprocesssolutions.com](mailto:enquiries@waterprocesssolutions.com)

 Water-Process-Solutions

 @waterwps

Sales Literature No. WPSSL03000

Revision No. 1 08/08/2019

Water Process Solutions Ltd  
Unit 10,  
Mill Hall Business Estate,  
Aylesford,  
Kent, ME20 7JZ

**WATER PROCESS**  
 **SOLUTIONS**