

WATER PROCESS SOLUTIONS

SKID-MOUNTED CARBON ADSORBER (MCS Series)

Sales Literature No. WPSSL12192016



SKID-MOUNTED CARBON ADSORBER (MCS Series)

The IMS Model MCS carbon adsorber is a once-through activated carbon odor removal system designed to treat hydrogen sulfide (H₂S) & organic odors (VOCs) found in municipal wastewater collection systems and treatment processes. The MCS is a factory-assembled, skid-mounted odor control system complete with exhaust fan, damper, interconnecting ductwork, vessel, activated carbon media and local control panel. All components are mounted, piped, and wired on an epoxy coated carbon steel skid. System is designed for continuous and automatic operation as well as manual operation as required.

SUPERIOR PERFORMANCE MEDIA

The IMS carbon systems are designed to work with a wide selection of media:

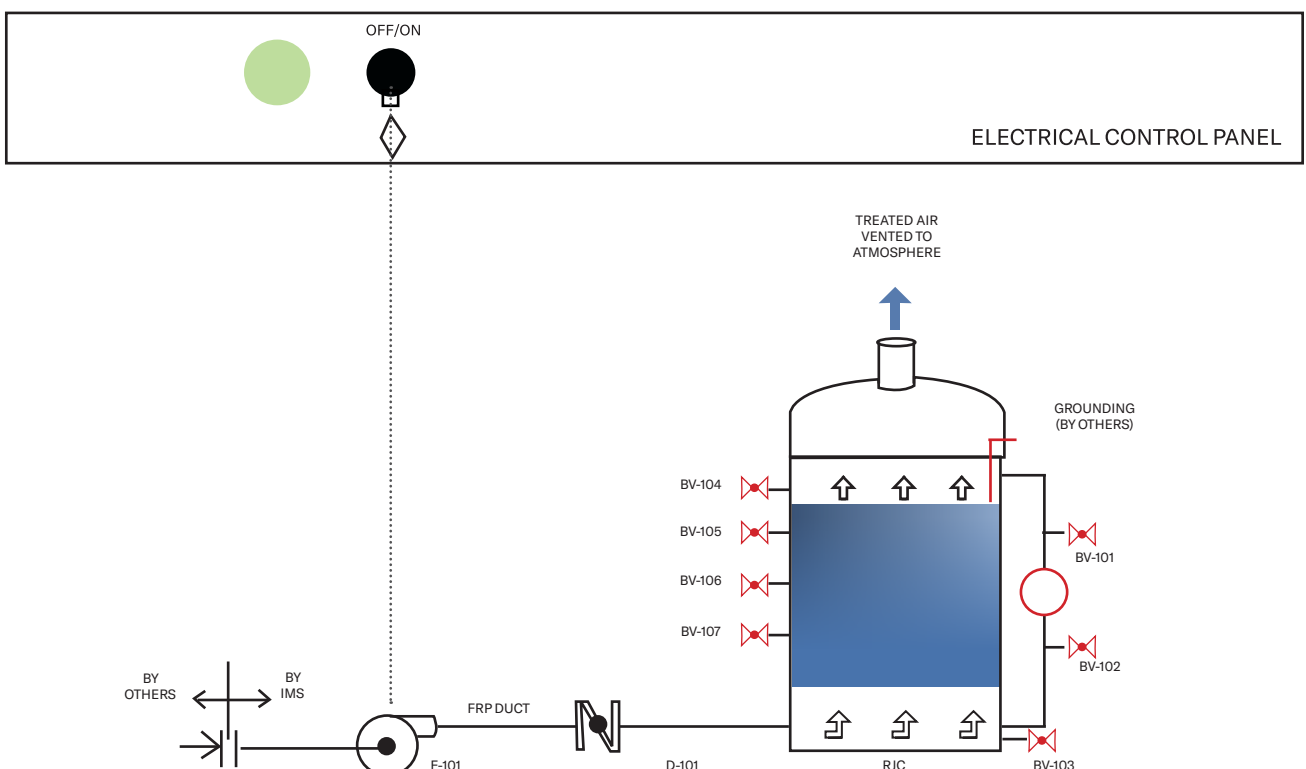
- Virgin activated carbon media for low odor levels
- High capacity carbon for higher H₂S concentrations

MAJOR SYSTEM COMPONENTS

- Epoxy Coated Steel Equipment Skid
- FRP Exhaust Fan
- FRP Transition Duct
- FRP Inlet Damper
- FRP Carbon Adsorber Vessel and Exhaust Stack
- Activated Carbon Media
- Electrical Control Panel



MCS Process & Instrumentation Diagram



How It Works

The exhaust fan operates continuously, pulling foul air from the process area and passing it through the carbon media. A volume control damper at the system inlet allows regulation of airflow through the carbon adsorber.

Inside the vessel, the foul air flows through a densely packed bed of activated carbon. The odorous compounds are removed from the airstream through a combination of physical adsorption and chemisorption. Odorous compounds are physically adsorbed in the carbon pores, and some may undergo chemical reaction to form elemental sulfur and sulfuric acid. This process continues until the activated carbon pores are filled up and the odorous compounds break through and are released out the stack.

System Features & Benefits


- Superior non-corrosive material
- Easy to operate
- Suitable for outdoor installation
- Fan sound enclosure (Optional)
- Compact, skid-mounted design
- Pre-assembled and factory tested


Standard Model Design Data

Model	Airflow Rate CFM (m ³ /h)	Overall Dimension L x W x H ft (mm)	Inlet Connection Inches (mm)	Shipping Weight lbs (kg)	Carbon Weight lbs (kg)	Fan Motor HP (kW)
MCS-0150	Up to 130 (Up to 220)	4.3 x 3.2 x 5.0 (1300 x 975 x 1500)	4.0 (100)	940 - 1010 (426 - 458)	130 - 200 (60 - 90)	1.0 (.75)
MCS-0200	105-235 (175-400)	5.3 x 3.5 x 5.0 (1600 x 1000 x 1500)	6.0 (150)	1225 - 1350 (710 - 805)	235 - 360 (105 - 160)	1.0 (.75)
MCS-0250	185-365 (315-620)	5.8 x 3.8 x 5.0 (1700 x 1100 x 1500)	6.0 (150)	1570 - 1770 (710 - 805)	370 - 510 (170 - 260)	1.5 (1.1)
MCS-0300	290-530 (490-900)	6.3 x 4.1 x 5.0 (1900 x 1200 x 1500)	8.0 (200)	1940 - 2230 (880 - 1012)	530 - 820 (340 - 370)	2.0 (1.5)
MCS-0350	420-720 (715-1225)	7.7 x 4.9 x 5.0 (2300 x 1500 x 1700)	8.0 (200)	2525 - 2925 (1145 - 1327)	720 - 1120 (325 - 510)	2.0 (1.5)
MCS-0400	575-940 (980-1600)	8.3 x 4.9 x 5.50 (2500 x 1500 x 1700)	10 (250)	3095 - 3605 (1404 - 1635)	940 - 1450 (425 - 665)	3.0 (2.2)
MCS-0450	750-1190 (1275-2025)	8.8 x 5.2 x 5.50 (2500 x 1600 x 1700)	10 (250)	3835 - 4495 (1740 - 2040)	1190 - 1850 (540 - 840)	3.0(2.2)
MCS-0500	950-1400 (1615-2380)	9.1 x 5.6 x 5.50 (2700 x 1700 x 1700)	12 (300)	4455 - 4285 (2020 - 2397)	1470 - 2300 (670 - 1045)	3.0 (2.2)



www.waterprocesssolutions.com
enquiries@waterprocesssolutions.com

 [Water-Process-Solutions](#)

 [@waterwps](#)

Water Process Solutions Ltd
Unit 10,
Mill Hall Business Estate,
Aylesford,
Kent, ME20 7JZ

WATER PROCESS
 **SOLUTIONS**

Sales Literature No. WPSSL12192016
Revision No.1 02/04/2020