

AfterBlend® Output Booster

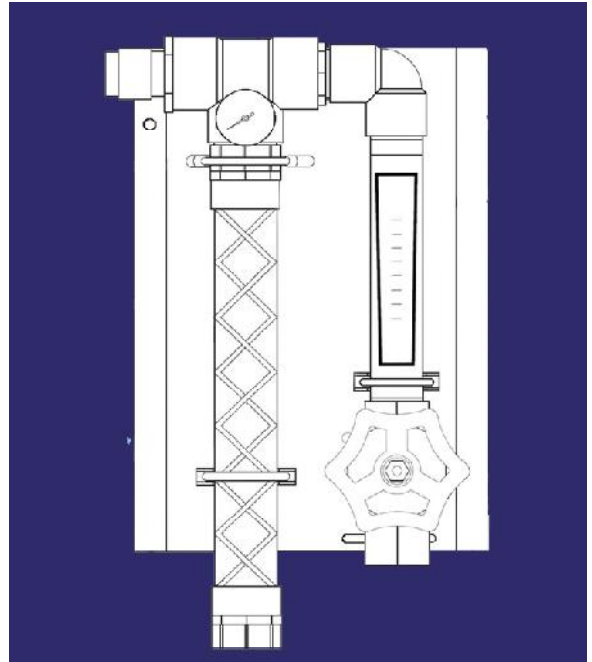
General Description

The mounted unit is designed to enhance the output capability of any size PolyBlend® polymer blending and feeding system. When connected to the stock solution discharge port of the PolyBlend® unit and a source of dilution water, the AfterBlend® booster can increase total system output by 600-800 GPH (2271.2-3028.3 LPH), depending on the model.

Depending upon the output of the PolyBlend® unit used in the system, total stock solution output can be precisely controlled in a range up to 7200 GPH (27,255 LPH).

The unique confluence design of the AfterBlend® booster allows independent adjustment of flow rates for both the stock solution and the dilution water streams, despite inlet water differential pressures (from 8-40 psig).

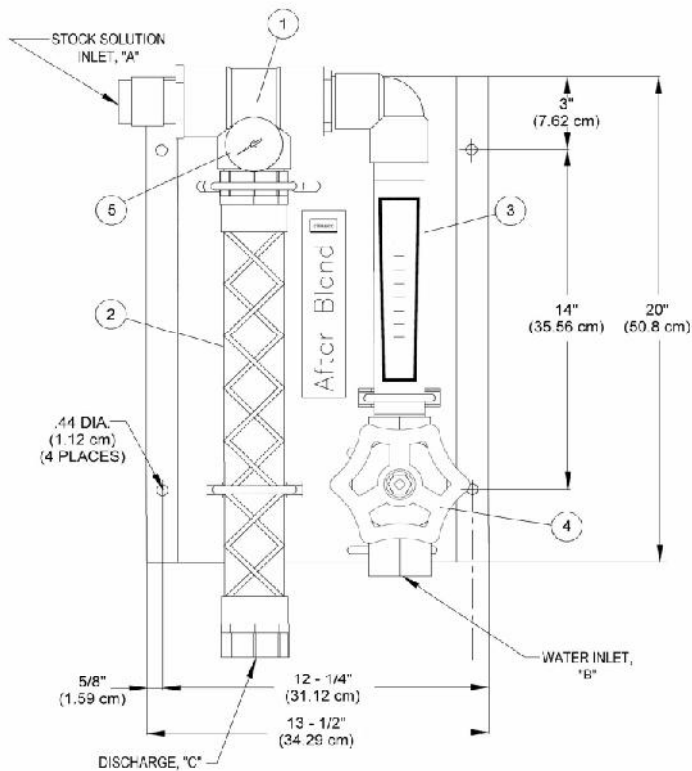
A static mixer with PVC housing provides thorough blending of the additional dilution water without damage to the polymer, which has already been activated in the mixing chamber of the PolyBlend® system.



Flow Rate

AF-600	60 - 600 GPH 227.1 - 2271.3 LPH
AF-1200	120 - 1200 GPH 454.3 - 4542.5 LPH
AF-2400	240 - 2400 GPH 908.5 - 9086 LPH
*AF-3600	360 - 3600 GPH 1362.8 - 13,627.5 LPH
*AF-4800	480 - 4800 GPH 1817 - 18,170 LPH

General Layout



Item No.	Description
1	Tee Assembly
2	Static Mixer
3	Flowmeter 0-10 GPM (0-37.9 LPM) 0-20 GPM (0-75.7 LPM) 0-40 GPM (0-151.4 LPM) 0-60 GPM (0-227.1 LPM) 0-80 GPM (0-302.8 LPM)
4	Globe Valve
5	Pressure Gauge

Note: PolyBlend® system discharge pipe size varies depending on model. Stock solution inlet of AfterBlend® booster should conform to PolyBlend® system. UGSI Chemical Feed, Inc. will supply appropriate stock solution inlet size on request.

Model	"A" in / mm	"B" in / mm	"C" in / mm
AF-600	1" (25.4)	1" (25.4)	2" (50.8)
AF-1200	1" (25.4)	1" (25.4)	2" (50.8)
AF-2400	1-1/2" (38.1)	1-1/2" (38.1)	2" (50.8)
*AF-3600	2" (50.8)	2" (50.8)	2" (50.8)
*AF-4800	2" (50.8)	2" (50.8)	2" (50.8)

Note: Optional solenoid valve for on/off control of dilution water available, add "S" at end of model.

* AfterBlend® booster configuration is different than shown. Please consult factory for certified dimensional drawing.

UGSI Chemical Feed, Inc.
1901 West Garden Road
Vineland, NJ 08360
Toll Free: 855-669-3845
Local: 856-896-2160
Fax: 856-457-5920
Email: info@ugsichemicalfeed.com
Website: www.ugsichemicalfeed.com

© 2014 UGSI Chemical Feed, Inc.
Subject to change without prior notice.
Literature No. CF.480.350.PAB.PS.0714

Polyblend® is a trademark of UGSI Chemical Feed, Inc.

The information provided in this literature contains merely general descriptions or characteristics of performance which in actual case of use do not always apply as described or which may change as a result of further development of the products. An obligation to provide the respective characteristics shall only exist if expressly agreed in the terms of a written contract.